

Caminhando pelo II, V7, I

Aula 06

Ciclo 01

Sax Eb

www.explicasax.com.br

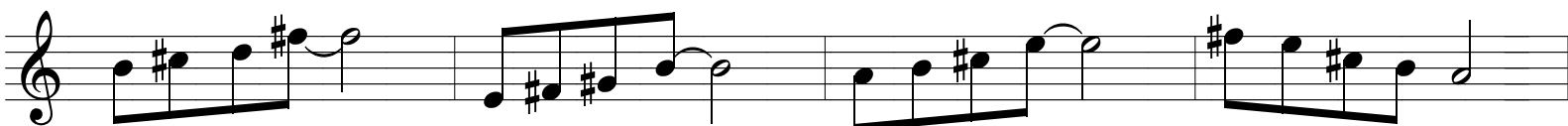
The image displays a musical score for saxophone in Eb, organized into six rows. Each row contains four measures, each with a specific chord and a corresponding melodic line. The chords are: Bm7, E7, Amaj7, A6 (Row 1); Am7, D7, Gmaj7, G6 (Row 2); Gm7, C7, Fmaj7, F6 (Row 3); Fm7, Bb7, Ebmaj7, Eb6 (Row 4); Ebm7, Ab7, Dbmaj7, Db6 (Row 5); and C#m7, F#7, Bmaj7, B6 (Row 6). The melodic lines are written in treble clef with a 4/4 time signature. The notes are primarily eighth and quarter notes, often beamed together, with some measures featuring slurs or ties. The overall structure is a cycle of 12 chords, each with a unique melodic phrase.

Bm⁷

E⁷

Amaj⁷

A⁶

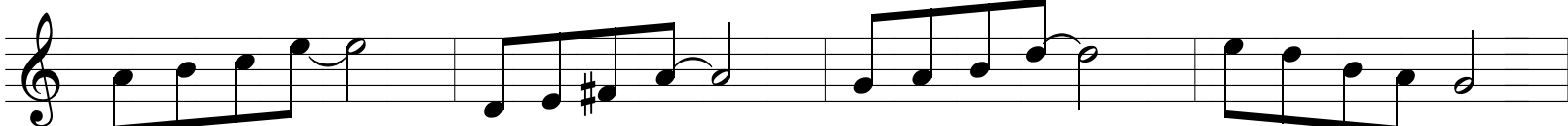


Am⁷

D⁷

Gmaj⁷

G⁶



Gm⁷

C⁷

Fmaj⁷

F⁶



Fm⁷

Bb⁷

Ebmaj⁷

Eb⁶

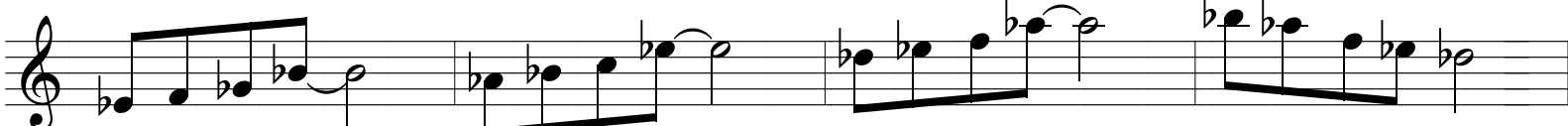


Ebm⁷

Ab⁷

Dbmaj⁷

D^b6



C#m⁷

F#⁷

Bmaj⁷

B⁶

