

Cheia de charme

Guilherme Arantes

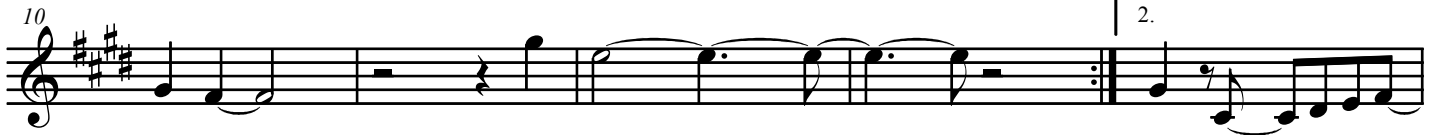
E G#m C#sus4 C#m C#sus4 C#m



F#m B E7 A7 1.



F#m6 G# C#m E/B A A B A7 2.



F#m7 B E E/G# A7 F#m7 B E/G#



A F#m7 B E/G# A B C#m E/G# A F#m7/A 1.



C#m A B D.C. al Coda



F#m7 B E E/G# A7 F#m7 B E/G#



A F#m7 B E/G# A B C#m E/G# A F#m7/A



Repete 3X